

Casambi Lichtsteuerung PWM5 Dimmer progr.

Artikel-Nr. 808615



Version V2.0

Product description

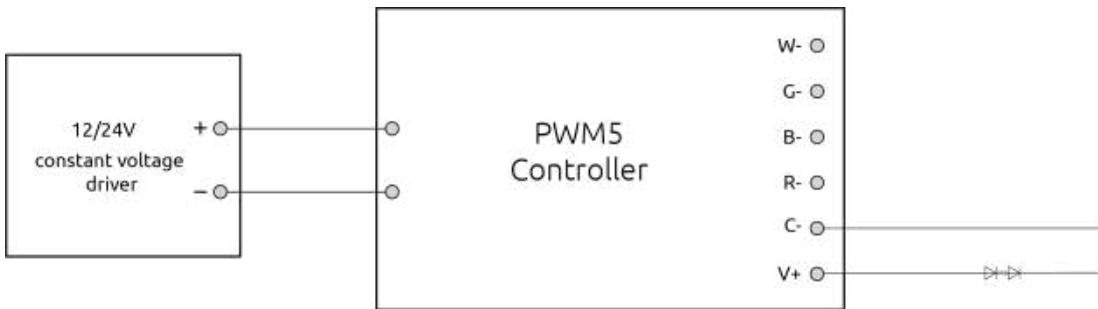
VBU-PWM5-IDP is a Bluetooth controllable, Casambi enabled 5 channel PWM dimmer for constant voltage LED loads, such as LED strips and constant voltage LED modules. It can be configured with 3 different fixture profile for 1,2,5-channel applications (dimming, tunable white, RGBCW).

VBU-PWM5-IDP is protected short circuit situation and against reverse polarity.

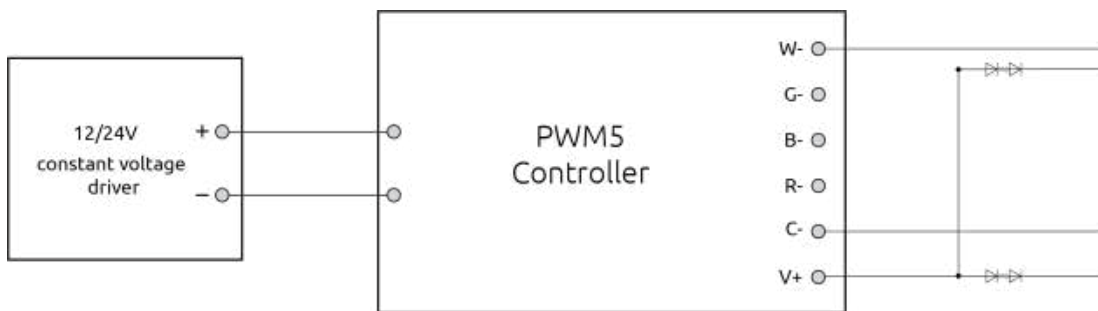
Specification parameters

Input voltage(DC)	• 12/24V
Output voltage(DC)	• 12/24V
Output power (24 V DC)	• 240W
Output power (12 V DC)	• 120W
Max(free allocation to channels)output current	• 10A
Ambient temperature t_a	• -20°C ... +40 °C
Max. casing temperature t_c	• 75 °C
Storage temperature t_s	• -25 ... +75 °C
Life time	• up to 50,000 h
Dimensions L x W x H	• 146 * 35.5 * 28 mm
Wire range, solid	• 0.75-1.5 mm ²
Wire strip length	• 6-8 mm
Degree of protection	• IP20

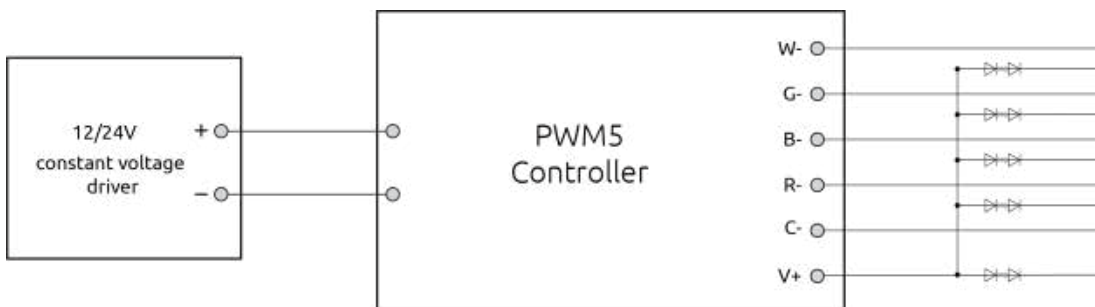
Wiring diagram, dim



Wiring diagram, tunable white



Wiring diagram, RGBCW



Fixture profiles

Profile#	Profile name / in app description	Description
34015	VBU-PWM5-IDP	For RGBCW application
35247	VBU-PWM5-IDP(TW)	For tunable white application
35248	VBU-PWM5-IDP(DIM)	For dimming application

Change fixture profile

- _ The default fixture profile in device is “VBU-PWM5-IDP”.
- _ If need to change the fixture profile of the device, make sure it is in unpaired status.
- _ Follow steps in Figure 2, change the fixture profile to “VBU-PWM5-IDP(DIM)” or “VBU-PWM5-IDP(TW)”.

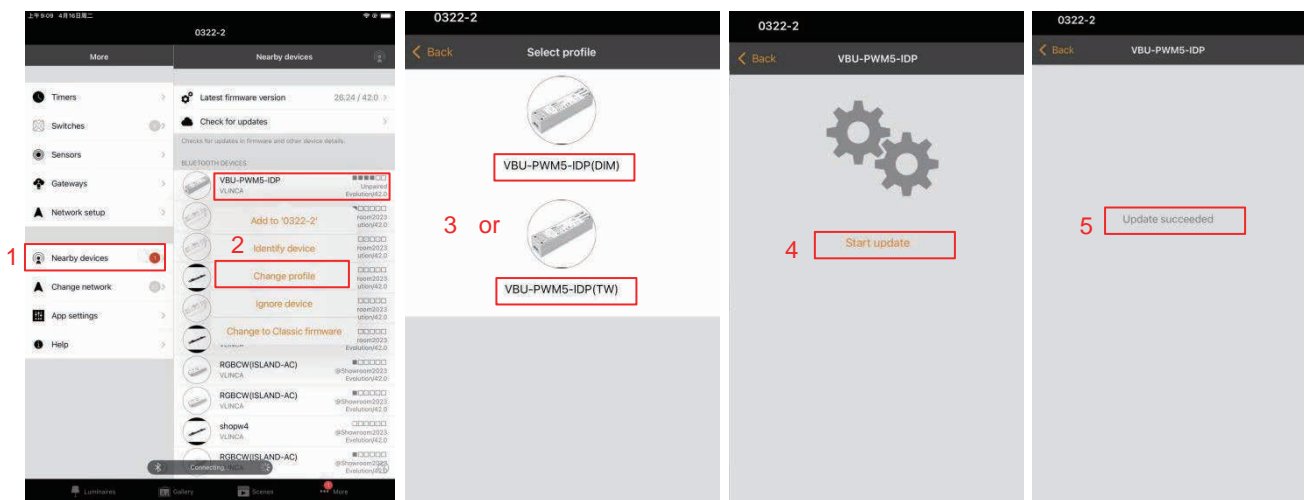


Figure 2

Button and LED indication

Reset button:

To unpair the device from other network, follow the steps in Figure 3. Then, using a needle to reach the inside reset button (as in Figure 4), and it will implement “Switch OFF and back ON again”.

LED indication:

The light flashes once indicate the device is successfully restarted.

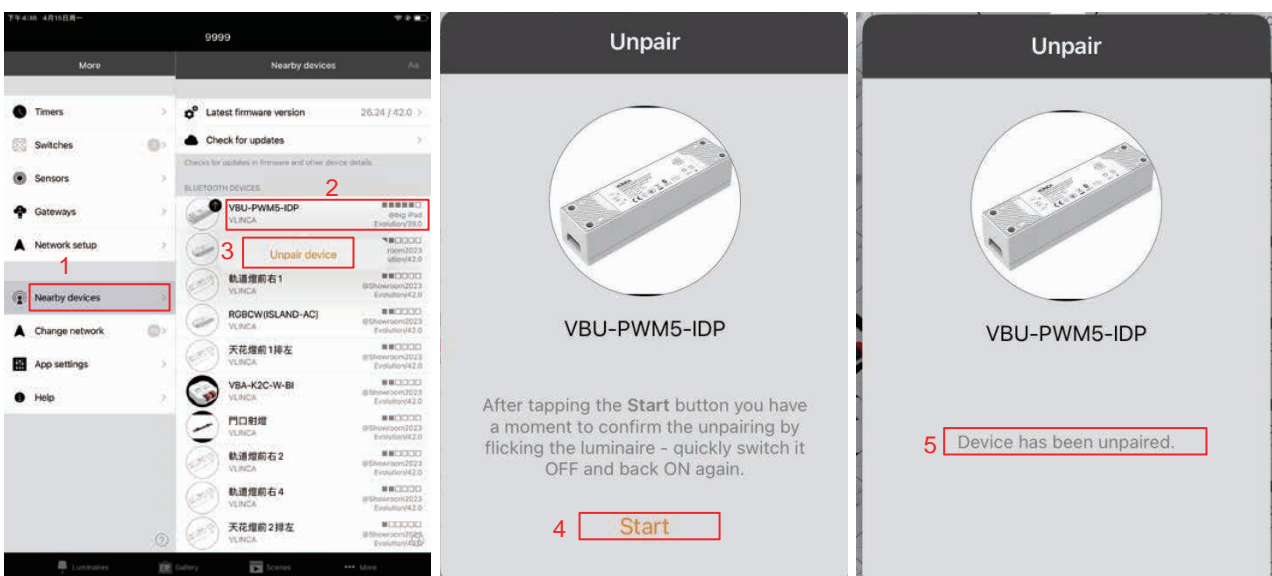


Figure 3

LED

Reset button

LED **VLINCA** Connected by **CASAMBI**
 Vlinca Beleuchtungstechnologie GmbH
 Am Seestern 8, Düsseldorf, 40547 Germany
VBU-PWM5-IDP
 5ch PWM Controller
 Input:12Vdc/24Vdc 11A Max
 Output voltage:12Vdc/24Vdc Max
 Output power:24Vdc @ 240W Max / 12Vdc @ 120W Max
 Output current (free allocation to channels):10A Max
 ta:-20...40 C tc:75 C

6-8 mm
 wire 0.75-2.5°

24V/12V-
 24V/12V+

Bottom
 tc

Made in China
 Date:wyy

DIM	TW	CV5
-	W-	W-
-	-	G-
-	-	B-
-	-	R-
C-	C-	C-
V+	V+	V+

Figure 4

DISPOSAL INSTRUCTIONS In line with EU

Directive 2012/19/EU for waste electrical and electronic equipment (WEEE), this electrical product must not be disposed of as unsorted municipal waste. Please dispose of this product by returning it to the point of sale or to your local municipal collection point for recycling.

COMPLIANCE STATEMENT

VLINCA declares that the VBU-PWM5-IDP fully complies with Directive 2014/53/EU.

Revision record

Version	Remark	Revision date
V1.0	Newly formulate	August 10, 2024
V2.0	Output power change:from 300W@24vdc,150W@12vdc to 240W@24vdc,120W@12vdc)	October 7, 2024