

451/V

LAMPENFASSUNG FÜR KOMPAKTSTOFFLAMPEN (TC-SEL)
LAMPHOLDER FOR COMPACT FLUORESCENT LAMPS (TC-SEL)

Technische Daten

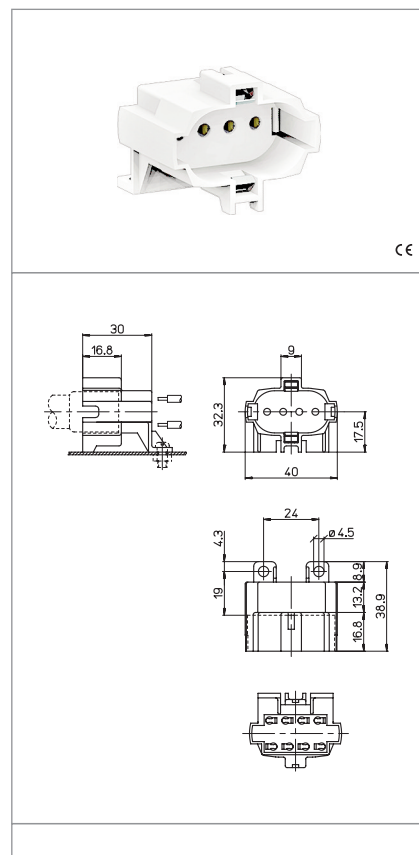
Technical data





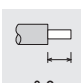


- LAMPENSOCKEL - Lamp cap	2G7
- Nennstrom und Nennspannung - Rated current and voltage	2A-250V
- Maximale Betriebstemperatur (IEC) - Maximum operating temperature (IEC)	T140
- Schutzgrad - Protection index	IP20
- Überspannungskategorie - Impulse withstand category	II

Merkmale

Characteristics

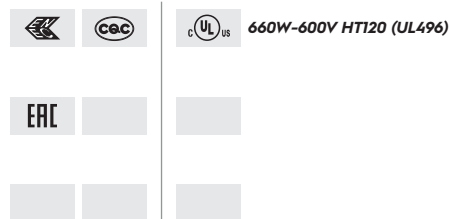
- Gehäuse aus PBT, weiss
- White PBT body
- Kupferlegierte Kontakte
- Copper alloy contacts



 Schraubbefestigung screw fixing	 Lichtpunkthöhe ab Oberfläche Leuchtenblech lamp centre height (from the top of the metal plate) 17,5	 Steckkontakte mit 2 Löchern push-wire terminals with 2 holes	 mm ² Feste Leitungsabschnitte rigid conductor section 0,5-1
 Leitungsabsolierung rigid wires stripping 8-9	 130	 S-451/3	

Prüfzeichen

Quality marks



Europäische Richtlinien

European directives

gemäß "RoHS"
"RoHS" compliant
unterliegt nicht "WEEE"
Not subject to "WEEE"

Gewichte und Verpackung

Weights and packaging

Artikel/Art. Produktreihe Product references	g Nettogewicht Net weight	n° pz pro Beutel per bag	n° pz pro Box per box	n° pz pro Karton per carton
451/V	14,1	500	100	

Bemerkung

Notes