

190/V

LAMPENFASSUNG FÜR T5 RINGLAMPE
LAMPHOLDER FOR T5 CIRCULAR FLUORESCENT LAMPS

Technische Daten

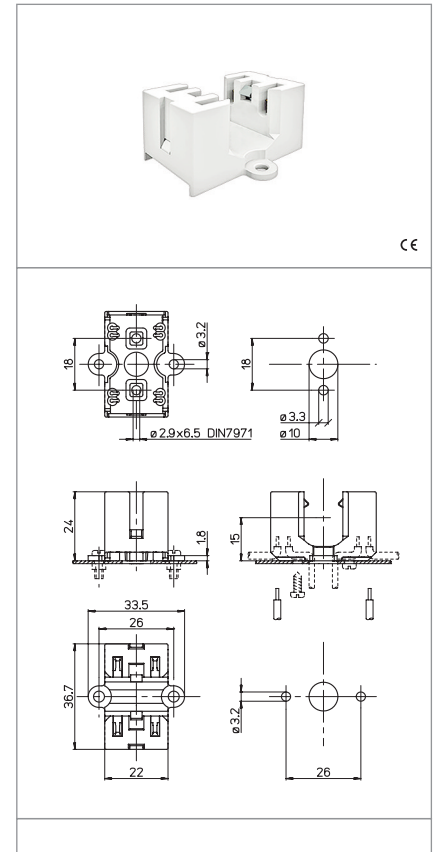
Technical data





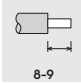
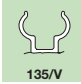
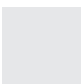
- LAMPENSOCKEL - Lamp cap	2GX13
- Nennstrom und Nennspannung - Rated current and voltage	2A-500V
- Maximale Betriebstemperatur (IEC) - Maximum operating temperature (IEC)	T110
- Schutzgrad - Protection index	IP20
- Überspannungskategorie - Impulse withstand category	III

Merkmale

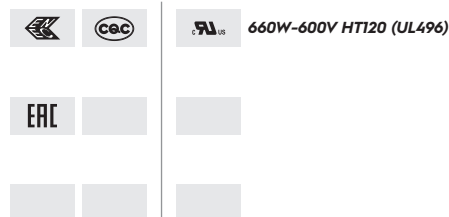
Characteristics

- Gehäuse aus PBT, weiss
- White PBT body
- Kupferlegierte Kontakte
- Copper alloy contacts



 Schraubbefestigung screw fixing	 Lichtpunkthöhe ab Oberfläche Leuchtenblech lamp centre height (from the top of the metal plate)	 Steckkontakte mit 2 Löchern push-wire terminals with 2 holes	 Feste Leitungsabschnitte rigid conductor section
 Leitungsabisolierung rigid wires stripping	 15		
	 135/V		

Prüfzeichen
Quality marks



Europäische Richtlinien
European directives

gemäß "RoHS"
"RoHS" compliant
unterliegt nicht "WEEE"
Not subject to "WEEE"

Gewichte und Verpackung
Weights and packaging

Artikel/Art. Produktinweise Product references	g Nettogewicht Net weight	n° pz pro Beutel per bag	n° pz pro Box per box	n° pz pro Karton per carton
190/V	11,1		200	

Bemerkung

Notes