

444/AU

Technische Daten

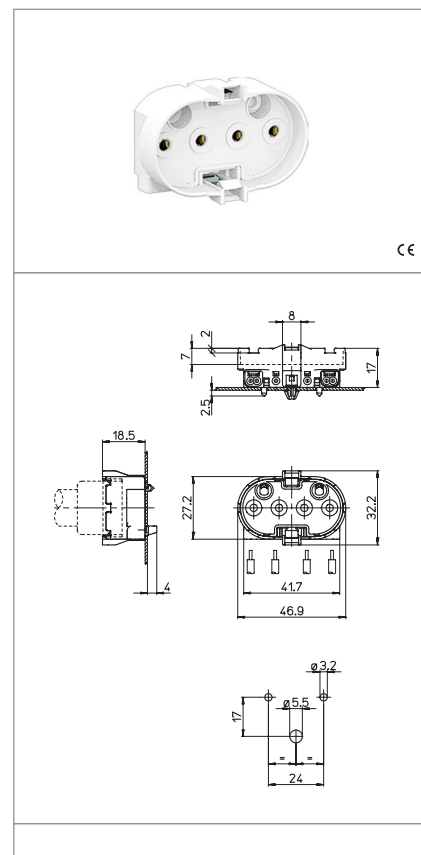
Technical data


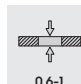


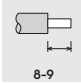

- Lampensockel - Lamp cap	2G11
- Nennstrom und Nennspannung - Rated current and voltage	2A-250V
- Maximale Betriebstemperatur (IEC) - Maximum operating temperature (IEC)	T140
- Schutzgrad - Protection index	IP20
- Überspannungskategorie - Impulse withstand category	III

Merkmale

Characteristics

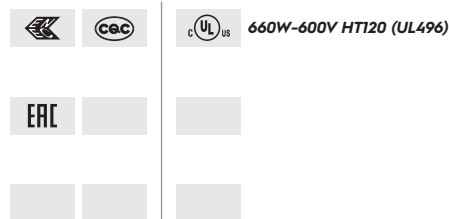
- Gehäuse aus PBT, weiss
- White PBT body
- Kupferlegierte Kontakte
- Copper alloy contacts



 Einteckbefestigung push-in fixing	 Blechstärke zur Befestigung fixing metal plate thickness 0,6-1	 Steckkontakte mit 2 Löchern push-wire terminals with 2 holes	 Feste Leitungsabschnitte rigid conductor section mm ² 0,5-1
 Leitungsabsolierung rigid wires stripping 8-9	 Schutzklasse II class II insulated	 S-444/4	

Prüfzeichen

Quality marks



Europäische Richtlinien

European directives

gemäß "RoHS"
"RoHS" compliant
unterliegt nicht "WEEE"
Not subject to "WEEE"

Gewichte und Verpackung

Weights and packaging

Artikel/Art. Produktinweise Product references	g Nettogewicht Net weight	n° pz pro Beutel per bag	n° pz pro Box per box	n° pz pro Karton per carton
444/AU	10,8	500	100	

Bemerkung

Notes