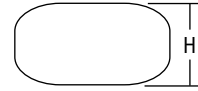
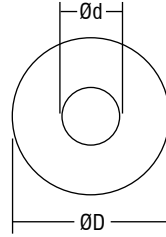


STANDARD CLASSE I

Trasformatori toroidali di sicurezza da incorporare Safety toroidal transformers for integrated installation


 Trasformatori toroidali
 Toroidal transformers

Articolo Article	Codice Code	Potenza Power VA	Tensione Voltage (in/out) V	Protezione Protection	Dimensioni Dimensions			Peso Weight gr.	Omologazioni Approvals	Confezioni Box
					Ød	ØD	H			
TO 20 I	146700	20	230/12	FEV*	23	72	26	440		5
TO 20 SV/U	147010	20	120/12	FEV*	22	60	40	400		5
TO 20 LI.VF	147110	20	230/12	FEV*	23	68	31	440		5
TO 20 LV	147120	20	230/12	PTC	23	68	31	440		5
TO 20 LK	149220	20	230/12	TA	23	68	31	440		5
TO 20 V/U	147020	20	120/12	FEV*	23	68	31	440		5
TO 35 K	149070	35	230/12	TA	25	75	32	550		5
TO 40 K	148080	40	230/12	TA	28	82	32	720		5
TO 50 SI.VF	147330	50	230/12	FEV*	23	68	45	700		5
TO 50 SV	147150	50	230/12	PTC	23	68	45	700		5
TO 50 SV/U	147030	50	120/12	FEV*	23	68	45	700		5
TO 50 TK	148383S	50	230/12	TA	27	78	35	700		5
TO 50 TR	147935	50	230/12	TA	23	78	30	690		5
TO 50 TR (cl. F)	147908A	50	240/12	TA	23	78	30	690		5
TO 50 LI/VF	147340	50	230/12	FEV*	28	82	32	720		5
TO 50 LI/TF	147340F	50	230/12	TF	28	82	32	720		5
TO 50 LV	147160	50	230/12	PTC	28	82	32	720		5
TO 50 LK	149230	50	230/12	TA	28	82	32	720		5
TO 50 V/U	147040	50	120/12	FEV*	28	82	32	720		5
TO 50 DAI	147510	50	230/12	FEV*	28	82	32	750		5
TO 50 DAV	147520	50	230/12	TA	28	82	32	750		5
TO 50 DAV/U	147050	50	120/12	FEV*	28	82	32	750		5
TO 60 I.VF	147350	60	230/12	FEV*	40	88	32	800		5
TO 60 K	149240	60	230/12	TA	40	88	32	800		5
TO 60 KV	147170	60	230/12	PTC	40	88	32	800		5
TO 60 V/U	147060	60	120/12	FEV*	40	88	32	800		5
TO 60 SI.VF	147064	60	230/12	FEV*	28	82	32	800		5
TO 60 SK	147064A	60	230/12	TA	28	82	32	800		5
TO 60 SV	147064B	60	230/12	PTC	28	82	32	800		5
TO 60 K	149241	60	240/12	PTC	28	82	32	800		5
TO 70 (cl. F)	149058	70	240/12	TF	30	72	50	800		5
TO 80 SK	148183	80	230/12	TA	28	70	54	850		5
TO 80 K	148180	80	230/12	TA	30	90	39	990		5
TO 80 VF	148185	80	230/12	FEV*	30	90	39	990		5
TO 100 SK	147186A	100	230/12	TA	32	80	52	1150		5
TO 100 I.VF	147360	100	230/12	FEV*	35	96	39	1130		5
TO 100 V	147180	100	230/12	PTC	35	96	39	1130		5
TO 100 V/U	147070	100	120/12	FEV*	35	96	39	1200		5
TO 105 K	147940	105	230/12	TA	38	98	40	1250		5
TO 120 K	147945	120	230/12	TA	38	98	40	1250		5
TO 150 K	147720N	150	230/12	TA	30	80	67	1350		5
TO 150 LI	147728S	150	230/12	FEV*	33	100	50	1350		5

Trasformatori toroidali di sicurezza da incorporare Safety toroidal transformers for integrated installation

Norme di riferimento
Reference Norms:
EN 61558-1
EN 61558-2-6

Tensione Voltage
230 V - 12 V
240 V - 12 V
120 V - 12 V

Frequenza Frequency
0/50...60 Hz

Potenza Power
20 ÷ 750 VA

- Trasformatori da incorporare IP00.
 - Classe termica di isolamento B = 120°C.
- A richiesta disponibile versione 240 V.**
A richiesta disponibile versione 24 V o altre.

- IP00 transformers for integrated installation.
 - Thermal insulation class B = 120°C.
- 240 V version available upon request.**
24 V version available upon request.

0,5 - 1,5 □



Articolo Article	Codice Code	Potenza Power VA	Tensione Voltage (in/out) V	Protezione Protection	Dimensioni Dimensions			Peso Weight gr.	Omologazioni Approvals	Confezioni Box
					Ød	ØD	H			
TO 150 I.VF	147370	150	230/12	FEV*	35	98	45	1250		5
TO 150 V	147190	150	230/12	TA	35	98	45	1500		5
TO 150	147191	150	240/12	TA	35	98	45	1500		5
TO 150 V/U	147080	150	120/12	FEV*	35	98	45	1500		5
TO 160 SI	147303S	160	230/12	FEV*	35	90	50	1550		5
TO 160 K	147216	160	230/12	TA	35	98	45	1550		5
TO 160 LK	147667S	160	240/12	TA	32	115	40	1550		5
TO 180	147376	180	230/12	TA	45	115	45	1990		5
TO 200 SK	147740N	200	230/12	TA	39	99	63	2000		5
TO 200 LI	147729S	200	230/12	FEV*	40	108	53	2000		5
TO 200	147380	200	230/12	FEV*	45	115	45	1990		5
TO 200 V	147200	200	230/12	TA	45	115	45	1990		5
TO 200 V/U	147090	200	120/12	FEV*	45	115	45	1990		5
TO 210	147215	210	230/12	TA	45	115	45	2000		5
TO 250 K	148344S	250	230/12	TA	44	116	53	2000		5
TO 250	147550	250	230/12	FEV*	43	118	48	2100		5
TO 250 V	147560	250	230/12	TA	43	118	48	2100		5
TO 300	147390	300	230/12	FEV*	40	130	45	2800		5
TO 300 V	147210	300	230/12	TA	40	130	45	2800		5
TO 300 SV/U	148336	300	120/12	FEV*	37	115	55	2800		5
TO 300 V/U	147100	300	120/12	FEV*	40	130	45	2800		5
TO 310 K	148334	310	230/12	TA	37	115	55	2800		5
TO 350 V	148070	350	230/12	TA	40	132	57	3600		5
TO 400	147400	400	230/12	FEV*	40	132	57	3600		5
TO 400 V	147220	400	230/12	TA	40	132	57	3600		5
TO 400 V/U	147960	400	120/12	FEV*	40	132	57	3600		5
TO 500	147410	500	230/12	FEV*	40	133	68	4100		5
TO 500 V	147230	500	230/12	TA	40	133	68	4100		5
TO 500 V/U	148050	500	120/12	FEV*	40	136	68	4100		5
TO 600	148310	600	230/12	FEV*	40	136	70	4100		5
TO 600 K	148315	600	230/12	TA	40	136	70	4100		5
TO 2x300	148309	600	240/12	TA	45	162	57	4300		5
TO 750	147243	750	230/12	FEV*	45	150	70	6000		5
TO 750 V	147239	750	230/12	TA	45	150	70	6000		5

* FEV fusibile esterno da montare su primario (attenersi al valore del fusibile indicato sull'etichetta del trasformatore).
Add the FEV protection, externally assembled (see fuse value on the transformer label).

STANDARD CLASSE I



Trasformatori toroidali di sicurezza da incorporare
Safety toroidal transformers for integrated installation



20 VA



50 VA



100 VA



150 VA



160 VA



200 VA



400 VA



600 VA

Trasformatori toroidali
Toroidal transformers