

# E27 ed E14 per luminarie

## E27 and E14 for lighting chains

NORME DI RIFERIMENTO  
STANDARD REFERENCE

EN 60238  
EN 60238



### 5727 E27 4A 250V T165

**Portalamпада E27 per catene luminose** in classe II - IP44 solo con guarnizione 393 - Max 40W - morsetti a perforazione per cavo H05RNH2-F - in Bachelite.

**E27 lampholder for lighting chains** class II - IP44 with gasket 393 only - Max 40W - piercing terminals for H05RNH2-F cable - Bakelite.

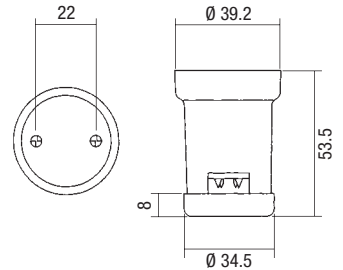
Codice articolo  
Article code

**DU/5727**



500

32,4



### 393/A

Guarnizione - in gomma.  
Rubber gasket.

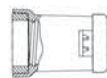
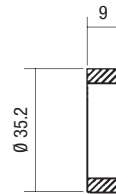
Codice articolo  
Article code

**393/A/N**



500

4,8



**Fissare la guarnizione con colla siliconica**  
**Fix the inside gasket by silicone glue**



### 10041 E14 2A 250V

**Portalamпада in termoplastico E14** - Due conduttori unipolari H03VH7-H sezione 0,75mm<sup>2</sup>

**E14 thermoplastic lampholders** - Two one-way cable H03VH7-H section 0,75mm<sup>2</sup>

Codice articolo  
Article code

**10041**



50

16,3

