

35/CVD

35/SVD

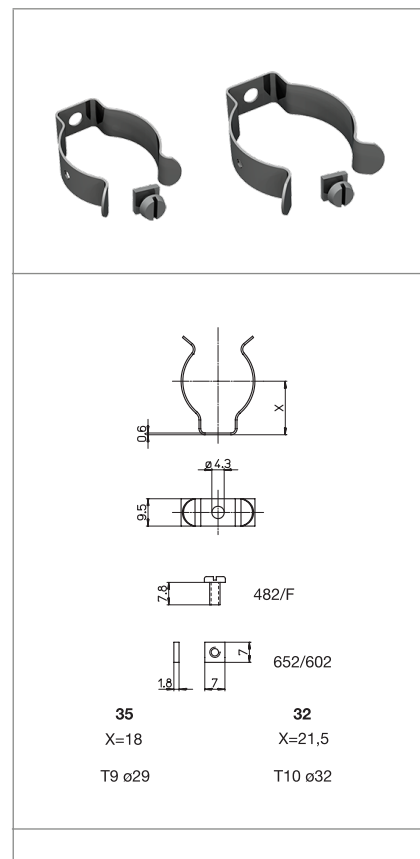
32/CVD

32/SVD

**CLIPS
CLIPS**

Technische Daten

Technical data




Merkmale

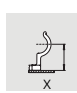
Characteristics

aus nickelbeschichtetem Stahl
in nickel plated steel

.../CVD= mit Befestigungsschraube und Mutter
.../CVD= with fixing screw and nut

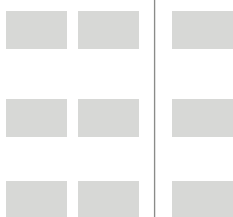
.../SVD= ohne Schraube und Mutter
.../SVD= without fixing screw and nut

 Schraubbefestigung
screw fixing

 Lichtpunkthöhe
lamp centre height (from the top of the metal plate)

Prüfzeichen

Quality marks



Europäische Richtlinien
European directives

Gemäß "RoHS"
"RoHS" compliant

Unterliegt nicht "WEEE"
Not subject to "WEEE"

Gewichte und Verpackung

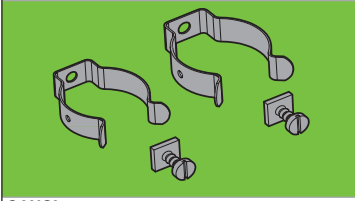
Weights and packaging

Art. Codice prodotti Product references	g Peso netto Net weight	n° pz per sacco per bag	n° pz per scatola per box	n° pz per cartone per carton
35/CVD	4,9	200		
35/SVD	3,5	200		
32/CVD	5,7	200		
32/SVD	4,3	200		

Bemerkung

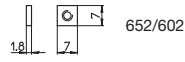
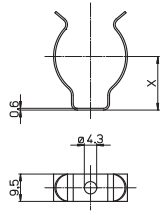
Notes

35/CVD 32/CVD
35/SVD 32/SVD



GANCI
 in acciaio nichelato
 .../CVD= con vite e dado di fissaggio
 .../SVD= senza vite e dado di fissaggio

CLIPS
 in nickel plated steel
 .../CVD= with fixing screw and nut
 .../SVD= without fixing screw and nut



35	32
X=18	X=21,5
T9 ø29	T10 ø32

