

112

112/D

## STARTERFASSUNG MIT DISTANZHÜLSE STARTERHOLDER WITH SPACING COLLAR

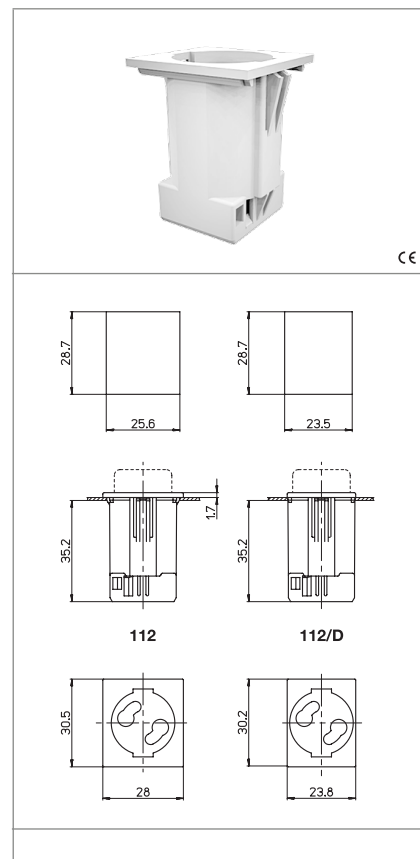
### Technische Daten Technical data

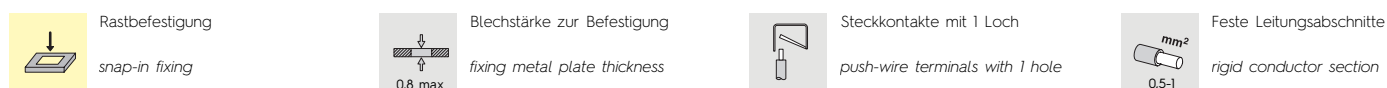
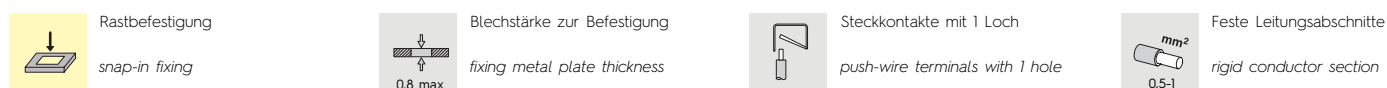
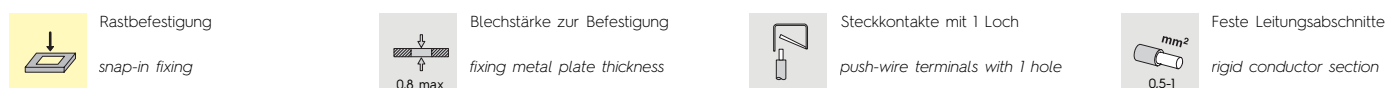
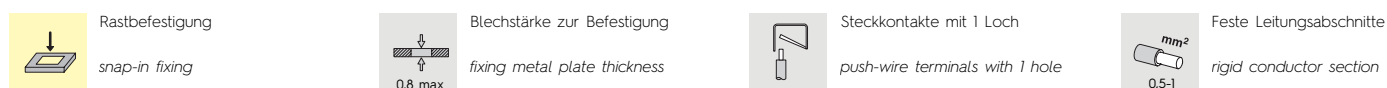
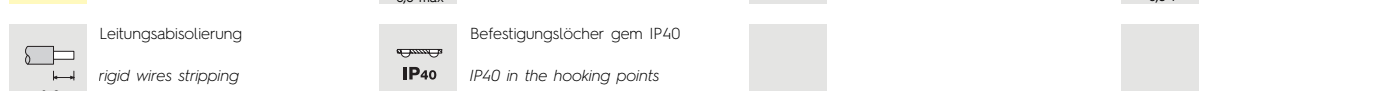
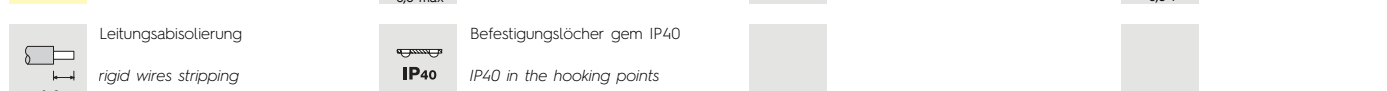
- Nennstrom und Nennspannung - Rated current and voltage	2A-250V
- Maximale Betriebstemperatur (IEC) - Maximum operating temperature (IEC)	T100
- Schutzgrad - Protection index	IP20
- Überspannungskategorie - Impulse withstand category	III

### Merkmale

#### Characteristics

- Gehäuse aus polycarbonat, weiß  
- White polycarbonate body
- Kupferlegierte Kontakte  
- Copper alloy contacts



 Rastbefestigung snap-in fixing	 Blechstärke zur Befestigung fixing metal plate thickness 0,8 max	 Steckkontakte mit 1 Loch push-wire terminals with 1 hole	 Feste Leitungsabschnitte rigid conductor section 0,5-1 mm <sup>2</sup>
 Leitungsabsicherung rigid wires stripping 8-9	 Befestigungslöcher gem IP40 IP40 in the hooking points		

### Prüfzeichen

#### Quality marks



### Europäische Richtlinien European directives

Gemäß "RoHS"  
"RoHS" compliant

Unterliegt nicht "WEEE"  
Not subject to "WEEE"

### Gewichte und Verpackung

#### Weights and packaging

Art. Codice prodotti Product references	g Peso netto Net weight	n° pz per sacco per bag	n° pz per scatola per box	n° pz per cartone per carton
112	7,3	500		
112/D	7	500		

### Bemerkung

#### Notes