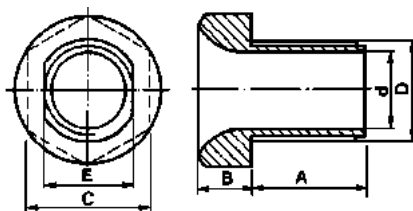


## Nipplo a testa esagonale

### Hexagonal head nipples

Per tutti i tipi di nipplo la lunghezza del tratto filettato ha toll.  $\pm 1$  mm.

For all nipples thread has  $\pm 1$  mm tolerance.

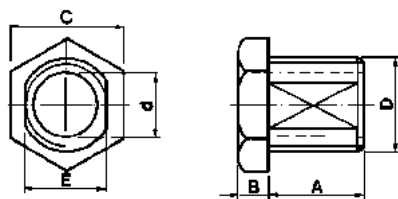


Materiale / Material

**6** Nylon 66 RV

**18** Polibutili RV-AE

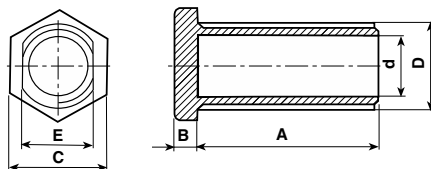
Codice / Code	Dimensioni / Dimensions (mm)						Colore / Colour	
	A	B	C	D	d	E	<b>1</b> Bianco White	<b>2</b> Nero Black
5125/3/510	10	3,5	17	M 13x1	10	11,5	Materiale Material →	<b>6</b> <b>18</b>
5125	10	7	17	M 13x1	10	11,5		<b>6</b> <b>18</b>
5125/15	15	7	17	M 13x1	10	11,5		<b>6</b>



Materiale / Material

**6** Nylon 66 RV

Codice / Code	Dimensioni / Dimensions (mm)						Colore / Colour	
	A	B	C	D	d	E	<b>1</b> Bianco White	<b>2</b> Nero Black
5016/2/7	7	3	12	M 10x1	7	8,5	Materiale Material →	<b>6</b> <b>6</b>
5016/2/10	10	3	12	M 10x1	7	8,5		<b>6</b> <b>6</b>
5016/2/15	15	3	12	M 10x1	7	8,5		<b>6</b> <b>6</b>
5016/2/20	20	3	12	M 10x1	7	8,5		<b>6</b>
5016/2/25	25	3	12	M 10x1	7	8,5		<b>6</b>
5016/2/30	30	3	12	M 10x1	7	8,5		<b>6</b>



Materiale / Material

**6** Nylon 66 RV

Codice / Code	Dimensioni / Dimensions (mm)						Colore / Colour	
	A	B	C	D	d	E	<b>1</b> Bianco White	<b>2</b> Nero Black
5016/0/210	10	3	12	M 10x1	7	8,5	Materiale Material →	<b>6</b>

M 10x1: Coppia serraggio max = 130 N cm - M 10x1: Max tightening torque = 130 N cm