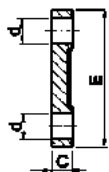
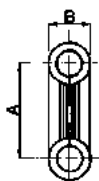




Bloccacavi

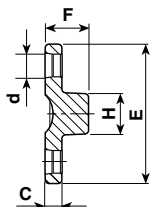
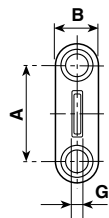
Cable clamps



Materiale / Material

- 6** Nylon 66 RV
- 18** Polibutil RV-AE
- 21** Nylon 66 RV-AE

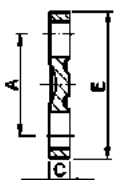
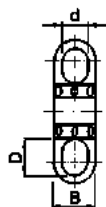
Codice / Code	Dimensioni / Dimensions (mm)					Colore / Colour	
	A	B	C	d	E	1 Bianco White	2 Nero Black
5922/3	16	7	3	3,1	23	6	6
5922/15	15	7	3	4	22	6 21	21
5922	16	7	3	4,2	23	6	6 18 21
5922/17	18	6,2	3	4	26	6	6 18 21



Materiale / Material

- 21** Nylon 66 RV-AE

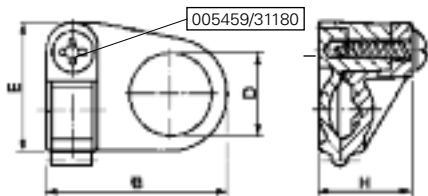
Codice / Code	Dimensioni / Dimensions (mm)								Colore / Colour	
	A	B	C	d	E	F	G	H	2 Nero Black	Materiale / Material
5922/1839	18	8	3	4,2	26	8	2	8	21	



Materiale / Material

- 6** Nylon 66 RV

Codice / Code	Dimensioni / Dimensions (mm)							Colore / Colour	
	A	B	C	D	d	E	2 Nero Black	Materiale / Material	
5922/18	18	7	3,5	6	3,9	26	6		



Materiale / Material

- 5** Nylon 66

- Approvati per l'utilizzo in **Classe I**
Approved for **Classe I** fittings
- Approvati per l'utilizzo in **Classe II**
Approved for **Classe II** fittings

Codice / Code	Dimensioni / Dimensions (mm)				Colore / Colour		Omologato Certified
	B	D	E	H	1 Bianco White	2 Nero Black	
5462/04	28,5	4	20	14	5	5	<input checked="" type="checkbox"/> C.S. N°EH 229 ©
5462/10	28,5	10	20	14	5	5	<input checked="" type="checkbox"/> C.S. N°EH 228 ©
5462/13	28,5	13	20	14	5	5	<input checked="" type="checkbox"/> C.S. N°EH 228 ©

I bloccacavi vengono forniti con vite autofilettante separata.
Per cavo H03VVH2-F sez. min 3,4x5,2 - sez. max 3,9x6,4

Cable clamps are supplied with separate self-threading screw.
For cable H03VVH2-F sect. min 3,4x5,2 - sect. max 3,9x6,4