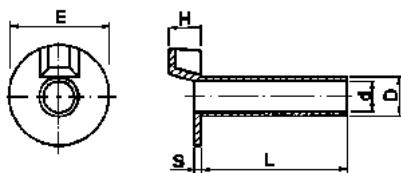




Protezioni isolanti per portalampane

Insulating protections for lamp holders



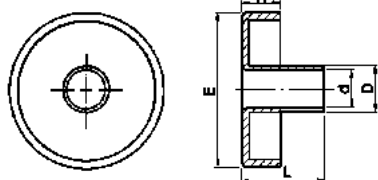
Materiale / Material

5 Nylon 66

6 Nylon 66 RV

Approvati per l'utilizzo in Classe II
Approved for Classe II fittings

Codice / Code	Dimensioni / Dimensions (mm)						Colore / Colour			Omologato Certified
	D	d	E	H	L	S	0 Neutro Natural	1 Bianco White	2 Nero Black	
5901/0	6,5	5,5	16,8	5,1	23,5	1,1	Materiale Material →	6	6	<input type="checkbox"/> C.S. N°EH 233
5469	6,5	5,5	15,4	5	18	1,2	5	5	5	<input type="checkbox"/> C.S. N°EH 233

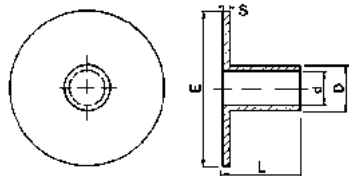


Materiale / Material

5 Nylon 66

Approvati per l'utilizzo in Classe II
Approved for Classe II fittings

Codice / Code	Dimensioni / Dimensions (mm)					Colore / Colour			Omologato Certified
	D	d	E	H	L	1 Bianco White	2 Nero Black	Materiale Material →	
5901/1	6,5	5,5	22,2	5	12	6	6	Materiale Material →	<input type="checkbox"/> C.S. N°EH 233
5900	6,5	5,5	22,2	5	30	5			<input type="checkbox"/> C.S. N°EH 233



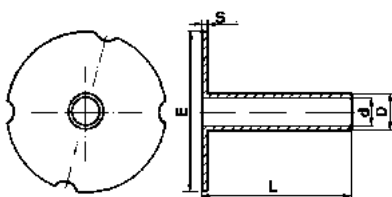
Materiale / Material

0 Polietilene

5 Nylon 66

Approvati per l'utilizzo in Classe II
Approved for Classe II fittings

Codice / Code	Dimensioni / Dimensions (mm)					Colore / Colour			Omologato Certified
	D	d	E	L	S	0 Neutro Natural	2 Nero Black	Materiale Material →	
5052	7	5,8	25	11	1	0 5	5	Materiale Material →	<input type="checkbox"/> C.S. N°EH 233
5172	7	6,2	16	12	1	0 5	5		<input type="checkbox"/> C.S. N°EH 233



Materiale / Material

3 Polipropilene

Codice / Code	Dimensioni / Dimensions (mm)					Colore / Colour		Materiale Material →
	D	d	E	L	S	1 Bianco White		
5902	6,5	5,5	29	27	0,7	3		