

### Shade ring for E14 lampholder

**Height:** 37 mm

**Diameter:** 45 mm

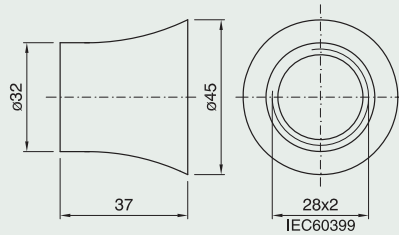
**Packaging:** 1000 pieces

**code 018290 black**

**code 018289 white**

**code 018291 gold**

*GHIERA E14 ART. 144 BIANCO*



### Shade ring with metal basket spring

for E14 lampholder

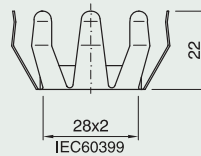
**Use:** to connect glass parts with  $\varnothing 38 \div 41$  mm hole

**Height:** 22 mm

**Packaging:** 1000 pieces

**code 018006**

*MRF 14 MOLLA A RAGNO*



### Shade ring with basket spring and metal flange

for E14 lampholder

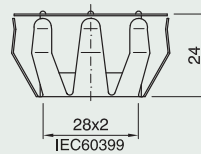
**Use:** to connect glass parts with  $\varnothing 38 \div 41$  mm hole

**Height:** 24 mm

**Packaging:** 1000 pieces

**code 002319**

*MRFA 14 MOLLA A RAGNO*



### Closed cord grip/insulator

for E14 three-piece lampholder\*

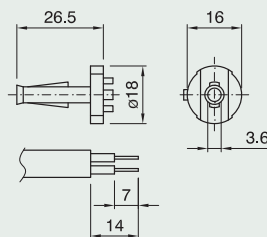
**Use:** class II applications with flat cables H03VVH2-F 2x0.75 mm<sup>2</sup> to use with a threaded metal stem (internal diameter: 6.5 ÷ 6.8 mm)

**Packaging:** 1000 pieces

**code 016622**

*SIB14 SERRACAVO INTERNO*

Approval:



\* See cord grips applications on page 238