

1208-S/210

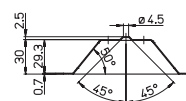
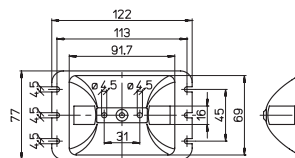
1208-S/230

## REFLEKTOREN REFLECTORS

### Technische Daten

Technical data

|  |  |
|--|--|
|  |  |
|  |  |
|  |  |
|  |  |
|  |  |
|  |  |



Für/For: 204/SX; 206/SX

### Merkmale

Characteristics

aus Aluminium  
in aluminum

– Mit engem Licht bundel  
– Close beam

– Befestigung durch 2Nieten, mit Durchm.  $\varnothing 4$   
– Must be mounted using two  $\varnothing 4$  rivets

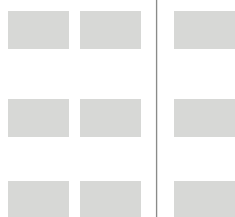


Schraubbefestigung

screw fixing

### Prüfzeichen

Quality marks



### Europäische Richtlinien

European directives

⊆ Gemäß "RoHS"  
"RoHS" compliant

⊆ Unterliegt nicht "WEEE"  
Not subject to "WEEE"

### Gewichte und Verpackung

Weights and packaging

| Art.<br>Codice prodotti<br>Product references | g<br>Peso netto<br>Net weight | n° pz<br>per sacco<br>per bag | n° pz<br>per scatola<br>per box | n° pz<br>per cartone<br>per carton |
|---|-------------------------------|-------------------------------|---------------------------------|------------------------------------|
| 1208-S/210                                    | 20,2                          |                               | 100                             |                                    |
| 1208-S/230                                    | 18,8                          |                               | 100                             |                                    |
|   |                               |                               |                                 |                                    |
|   |                               |                               |                                 |                                    |
|   |                               |                               |                                 |                                    |
|   |                               |                               |                                 |                                    |

### Bemerkung

Notes

**Bemerkung**

*Note*

