

H₂

Portalampade - Lampholders GZ10 - GU10

elektrogros ag
LED LICHTTECHNIK
LEUCHTENZUBEHÖR

A: Rütistrasse 18, CH-8952 Schlieren

T: +41 (0)44 730 56 56 W: www.elektrogros.ch

E: info@elektrogros.ch E: shop@elektrogros.ch



EN 60838-1

T250



MAX 1,5



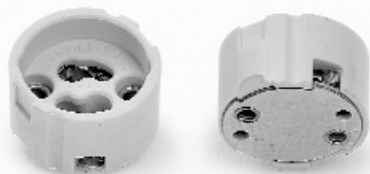
MAX 1,5



0,5 - 1

GU10-GZ10 2A 250V

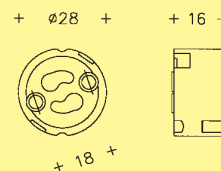
1000



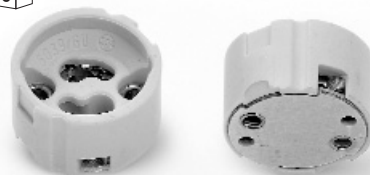
5039 GZ10-2A 250V

Corpo in steatite
Morsetti a vite
Contatti in lega Cu-Ni
Fissaggio con viti M3
Molla in acciaio inox
Cavetti a richiesta

Steatite body
Screw terminals
Cu-Ni alloy contacts
Fixing by M3 screws
Stainless steel spring
Wires on request



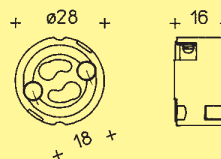
1000



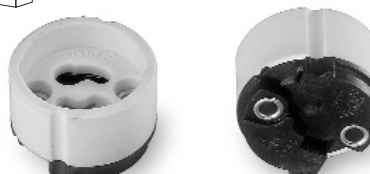
5039/GU GU10-2A 250V

Corpo in steatite
Morsetti a vite
Contatti in lega Cu-Ni
Fissaggio con viti M3
Molla in acciaio inox
Cavetti a richiesta

Steatite body
Screw terminals
Cu-Ni alloy contacts
Fixing by M3 screws
Stainless steel spring
Wires on request



1000

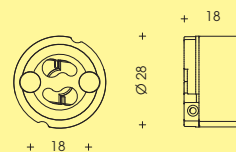


5039/2 GZ10-2A 250V

5039/GU/2 GU10-2A 250V

Corpo in LCP,
parte frontale in ceramica
Morsetti automatici
Fissaggio con viti M3
Cavetti a richiesta

LCP body,
ceramic front part
Push in terminals
Fixing by M3 screws
Wires on request



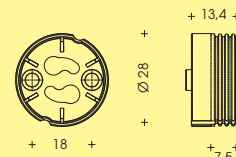
1000



5039/F/GU/2 GU10-2A 250V

Corpo filettato e
parte frontale in LCP
Morsetti automatici
Fissaggio con viti M3
Cavetti a richiesta

LCP front part and
threaded body
Push in terminals
Fixing by M3 screws
Wires on request



1000

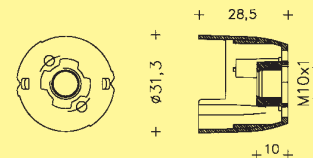


5039/GV

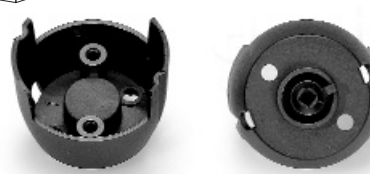
5039/G8

Nero
Cappellotto con filetto
stampato M10 x 1 (M8 x 1)
con viti di blocco

Black
Cap with threaded plastic
entry M10 x 1 (M8 x 1)
and locking screw



1000



5039/SP

Nero
Cappellotto per faretti
Fissaggio con vite

Black
Cap for spot
Clamping by screw

