

## EGE40

CE

### Lampholder:

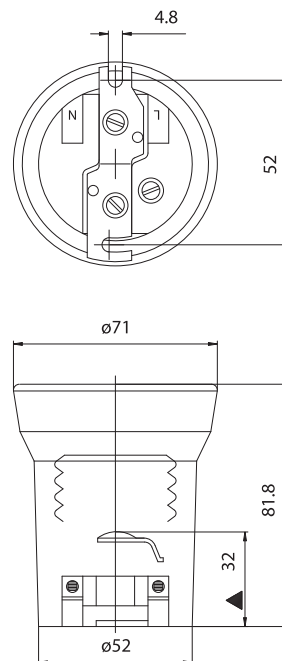
Rated voltage:  
Impulse voltage:  
Rated current:  
Working temperature:  
Type of clamps for  
cables connection:  
Clamps connecting capacity:  
Overvoltage category:  
Protection degree (IP):  
In conformity to the standards:  
In conformity to the requirements  
of the directive:

**E40**  
**500 V**  
**5 kV**  
**16 A**  
**T 300°C**  
**SCREW CLAMPS**  
**1,50 ÷ 4,00 mm<sup>2</sup>**  
**III**  
**IP20**  
**EN 60238**  
**2014/35/EU**



Approval marks:

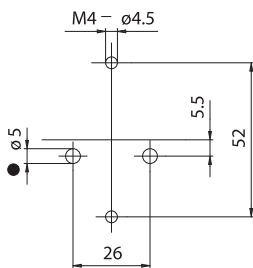
**EGE 40:** lampholder with anti-vibrations device and iron fixing plate bracket, with slotted holes diameter 4,2 mm with center distance 52 mm.



- The accessories available are listed at the end of this section.

▲ Central contact distance

- Porcelain body.  
Cap-side contact in nickel-plated copper with anti-vibrations device.  
Central contact in nickel-plated copper.  
Central contact pressure spring in normalized stainless steel.  
Nickel-plated brass clamps with slot screw.  
White-zinc plated iron fixing plate bracket, with slotted holes diameter 4,2 mm with center distance 52 mm
- Weight: 235 g.
- Instructions to fix the lampholder on structures.



EGE40

- Suggested minimum dimension for cables passage (if necessary)

- Fixing of the lampholder using M4 screws to be inserted in the slotted holes with center distance 52 mm.