

# ALIMENTATORI per lampade fluorescenti a catodi preriscaldati accensione con starter BALLASTS for fluorescent lamps with preheated cathodes in starter operation

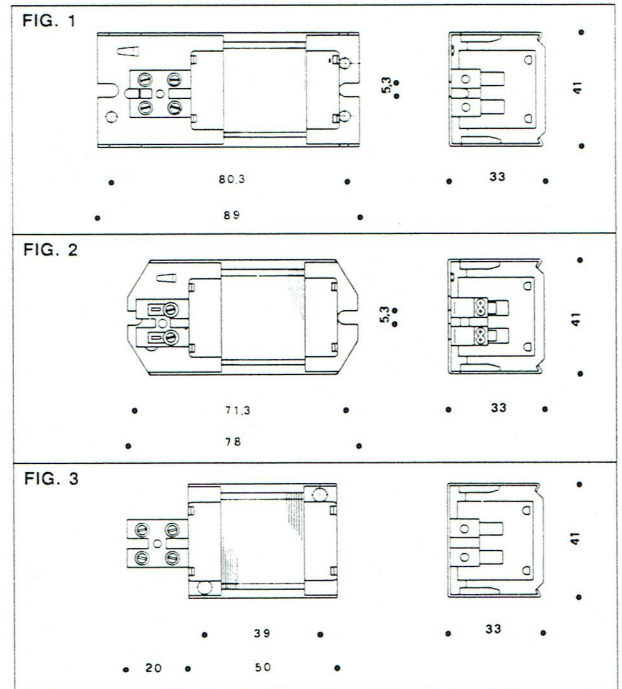
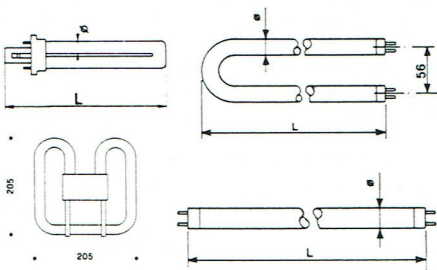
da 4 a 16 W 220 V ~ 50 Hz  
from 4 to 16 W 220 V ~ 50 Hz

## SERIE MEC 75

- Soluzione aperta  
*Built-in solution*
- Impregnati con resina poliesteri bianca  
*Impregnated with white polyester resin*
- Morsetto in nylon a vite o ad innesto rapido  
*Nylon screw or screwless terminals*
- Conformi alle norme CEI 34-4 e IEC 82  
*Complying to Standards CEI 34-4 and IEC 82*

### tw 130

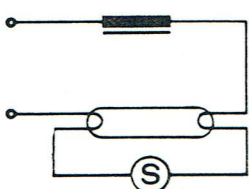
Tipi di lampade normalizzate  
*Types of normalized lamps*



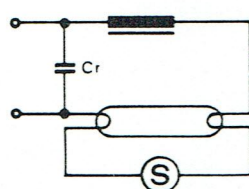
| Codice Code           | Lampada / Lamp |                  |                  |        | Alimentatore / Ballast                  |             |                  |      |        |
|-----------------------|----------------|------------------|------------------|--------|---|-------------|------------------|------|--------|
|                       | Potenza Power  | Corrente Current | Dimensioni Sizes |        | Induttivo e Capacitivo Induct. and cap. | Peso Weight | Marchi Approvals |      |        |
|                       | (W)            | (A)              | L (mm)           | φ (mm) |   |             | (cos-)           | (Kg) | Fig. 1 |
| 600502 <sup>(1)</sup> | 4              | 0.165            | 136              | 15.5   | 0.37                                    | 0.34        | SEV              | SEV  | SEV    |
|                       | 6              | 0.160            | 212              | 15.5   | 0.37                                    |             |                  |      |        |
|                       | 8              | 0.145            | 288              | 18.5   | 0.42                                    |             |                  |      |        |
| 600510 <sup>(2)</sup> | 5              | 0.185            | 112              | 12.0   | 0.28                                    | 0.34        |                  |      |        |
|                       | 7              | 0.175            | 133              | 12.5   | 0.32                                    |             |                  |      |        |
|                       | 9              | 0.170            | 165              | 12.5   | 0.35                                    |             |                  |      |        |
|                       | 11             | 0.155            | 234              | 12.5   | 0.45                                    |             |                  |      |        |
| 600526 <sup>(3)</sup> | 10             | 0.195            | 470              | 25.5   | 0.41                                    | 0.34        |                  |      |        |
|                       | 13             | 0.180            | 517              | 15.5   | 0.46                                    |             |                  |      |        |
| 600538                | 16             | 0.200            | 370              | 26.0   | 0.50                                    | 0.34        |                  |      |        |
| 600542 <sup>(4)</sup> | 18             | 0.22             | 173              | 12.5   | 0.53                                    | 0.34        |                  |      |        |

- NOTE:** (1) Può essere utilizzato per la connessione bilampada 2 x 4W  
*It can be used for 2 lamps connection 2 x 4W.*
- NOTES:** (2) Può essere utilizzato per la connessione bilampada 2 x 5W oppure 2 x 7W  
*It can be used for 2 lamps connection 2 x 5W or 2 x 7W*
- (3) Può essere utilizzato per la connessione bilampada 2 x 7 e 2 x 9W e per le lampade da 10 e 13W PLC o DULUX-D  
*It can be used for 2 lamps connection 2 x 7 and 2 x 9W and for lamps 10 and 13W PLC or DULUX-D*
- (4) Per lampade da 18W PLC o DULUX-D  
*For lamps 18W PLC or DULUX-D*

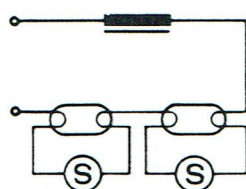
INDUTTIVO  
*INDUCTIVE*



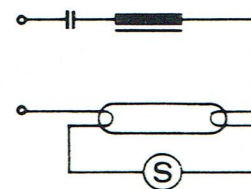
RIFASATO  
*COMPENSATED*



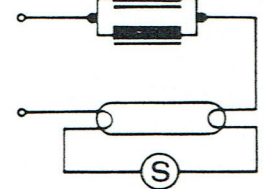
BILAMPADA  
*TANDEM*



CAPACITIVO  
*CAPACITIVE*



PARALLELO  
*PARALLEL*



I valori indicati nel presente catalogo non sono impegnativi e ci riserviamo la possibilità di apportare modifiche e migliorie.  
*The data indicated on the current catalogue are not binding and we reserve the possibility to bring eventual changes and improvements.*

L'Ufficio Tecnico della ERC è a disposizione per fornire ulteriori chiarimenti ed elementi utili per la scelta di alimentatori previsti per funzionare con tensioni e frequenze diverse.  
*ERC Technical office is at your full disposal for furthermore explanation and usefull elements for ballast choosing provided to work in different conditions from those taken on the actual catalogue.*