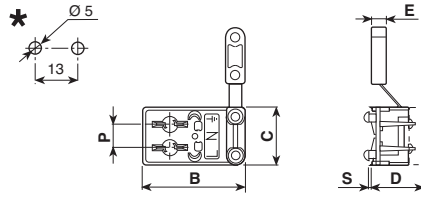


Artikel mit  sind ab Lager lieferbar.

Protezioni morsettiere Terminal block protections



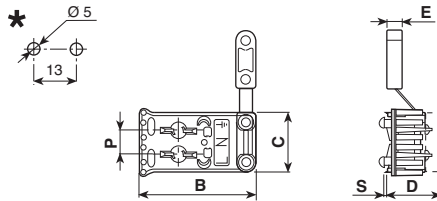
Materiale / Material

- 5** Nylon 66
- 22** Nylon 66 AE

☑️ Approvati per l'utilizzo in Classe I
Approved for Classe I fittings

Codice / Code	Dimensioni / Dimensions (mm)						Simbolo / Symbol	Colore / Colour		Omologato / Certified
	B	C	D	E	P	S		1 Bianco / White	2 Nero / Black	
5350/0	42,5	24	22	6	10	0,5±1,2		5	22	☑️ C.S. N°EH 230
5350/2	42,5	24	22	6	10	0,5±1,2	LN	5	22	☑️ C.S. N°EH 230
5350/3	42,5	24	22	6	10	0,5±1,2	LN ±	5 22	22	☑️ C.S. N°EH 230 ☺

* Dima di foratura - Il supporto viene fornito con vite autofilettante separata. - Per cavi: H03VV-F / H05VV-F Ø min 4,8 - Ø max 7,2
Template - Support is supplied with separate self-threading screw. - For cables: H03VV-F / H05VV-F Ø min 4,8 - Ø max 7,2



Materiale / Material

- 5** Nylon 66
- 22** Nylon 66 AE

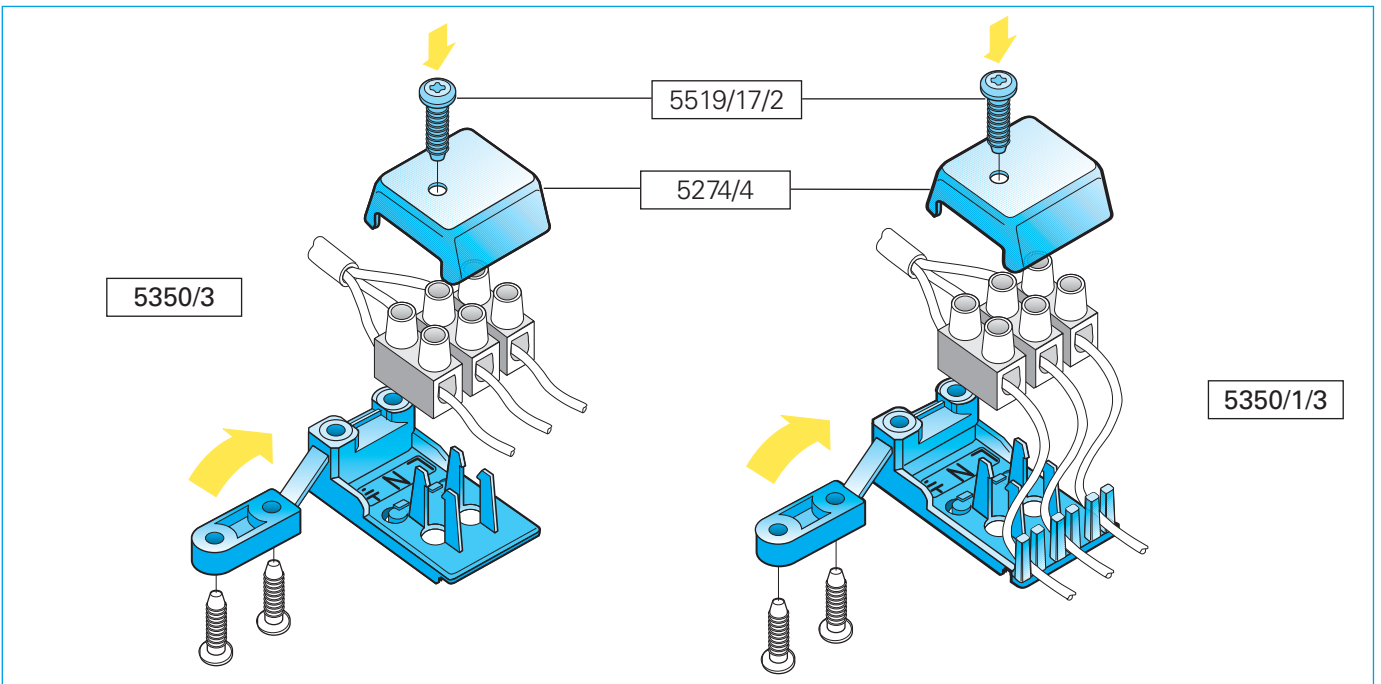
☑️ Approvati per l'utilizzo in Classe I
Approved for Classe I fittings

Codice / Code	Dimensioni / Dimensions (mm)						Simbolo / Symbol	Colore / Colour		Omologato / Certified
	B	C	D	E	P	S		1 Bianco / White	2 Nero / Black	
5350/1/0	46,5	24	22	6	10	0,5±1,2		5	22	☑️ C.S. N°EH 230 ☺
5350/1/2	46,5	24	22	6	10	0,5±1,2	LN	5	22	☑️ C.S. N°EH 230 ☺
5350/1/3	46,5	24	22	6	10	0,5±1,2	LN ±	5 22	22	☑️ C.S. N°EH 230 ☺

* Dima di foratura - Il supporto viene fornito con vite autofilettante separata. - Per cavi: H03VV-F / H05VV-F Ø min 4,8 - Ø max 7,2
Template - Support is supplied with separate self-threading screw. - For cables: H03VV-F / H05VV-F Ø min 4,8 - Ø max 7,2

Le protezioni per morsettiere possono essere utilizzate con i coperchi 5274-5274/4-5368-5368/4 senza che ne venga compromessa l'approvazione C.S.
Terminal block protections can be used with covers 5274-5274/4-5368-5368/4 without compromising C.S. approval.

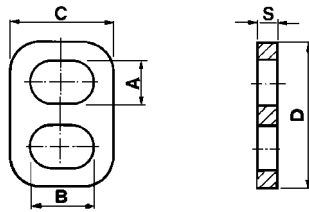
Esempio di utilizzazione Application example



Artikel mit  sind ab Lager lieferbar.

Bloccacavi antistrappo

Tearing preventing cable clamps

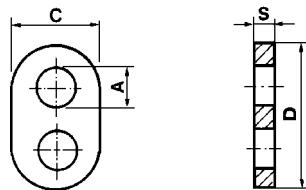


Materiale / Material
6 Nylon 66 RV
25 Polifenilensolfuro RV40

Approvati per l'utilizzo in **Classe II**
 Approved for **Classe II** fittings

Codice / Code	Dimensioni / Dimensions (mm)					Colore / Colour			Omologato Certified
	A	B	C	D	S	0 Neutro Natural	1 Bianco White	2 Nero Black	
5230	4	6	10	14	2,4	Materiale Material → 6 25	6	6	<input checked="" type="checkbox"/> C.S. N°EH 229

Carico max: **3 Kg** Per cavo H03VVH2-F sez. min 3x4,8 - sez. max 4x6
 Max load: **3 Kgs** For cable H03VVH2-F sect. min 3x4,8 - sect. max 4x6



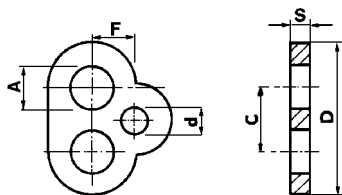
Materiale / Material
5 Nylon 66

Approvati per l'utilizzo in **Classe II**
 Approved for **Classe II** fittings

Codice / Code	Dimensioni / Dimensions (mm)				Colore / Colour		Omologato Certified
	A	C	D	S	1 Bianco White	2 Nero Black	
5050	7	14	23	2	Materiale Material → 5	5	<input checked="" type="checkbox"/> C.S. N°EH 229

Carico max: **3 Kg**
 Per cavi: H03VV-F Ø min 4,8 - Ø max 6,5 e H03VVH2-F sez. min 3,4x5,2 - sez. max 3,9x6,4

Max load: **3 Kgs**
 For cables: H03VV-F Ø min 4,8 - Ø max 6,5 and H03VVH2-F sect min 3,4x5,2 - sect. max 3,9x6,4



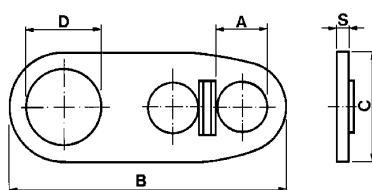
Materiale / Material
5 Nylon 66

Approvati per l'utilizzo in **Classe II**
 Approved for **Classe II** fittings

Codice / Code	Dimensioni / Dimensions (mm)						Colore / Colour		Omologato Certified
	A	B	C	D	S	d	1 Bianco White	2 Nero Black	
5110	7,5	40	15,5	11	1,4	4,5	Materiale Material → 5	5	<input checked="" type="checkbox"/> C.S. N°EH 229

Carico max: **3 Kg**
 Per cavo H03VV-F / H05VV-F Ø min 4,8 - Ø max 7

Max load: **3 Kgs**
 For cable H03VV-F / H05VV-F Ø min 4,8 - Ø max 7



Materiale / Material
5 Nylon 66

Approvati per l'utilizzo in **Classe II**
 Approved for **Classe II** fittings

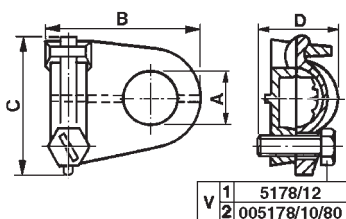
Codice / Code	Dimensioni / Dimensions (mm)					Colore / Colour		Omologato Certified
	A	B	C	D	S	1 Bianco White	2 Nero Black	
5228	7,5	40	15,5	11	1,4	Materiale Material → 5	5	<input checked="" type="checkbox"/> C.S. N°EH 229

Carico max: **3 Kg** Max load: **3 Kgs**
 Per cavo H03VV-F / H05VV-F Ø min 4,8 - Ø max 7 For cable H03VV-F / H05VV-F Ø min 4,8 - Ø max 7

Artikel mit  sind ab Lager lieferbar.

Bloccacavi

Cable clamps



Materiale / Material

6 Nylon 66 RV

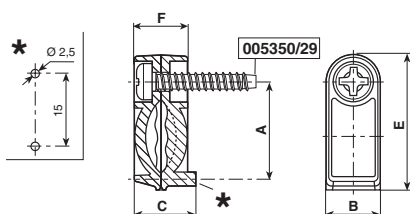
Codice / Code	Dimensioni / Dimensions (mm)					Colore / Colour		Note / Notes
	A	B	C	D	V	1 Bianco / White	2 Nero / Black	
5190/4	4	30	26	15	1	Materiale / Material → 6	6	●
5190/10	10	30	26	15	1	6	6	●
5190/0/4	4	30	26	15	1	6	6	● ●
5190/0/10	10	30	26	15	1	6	6	● ●
5190/0/13	13	30	26	15	1	6	6	● ●
5190/04/80	4	30	26	15	2	6	6	● ● ●
5190/10/80	10	30	26	15	2	6	6	● ● ●

I bloccacavi vengono forniti con vite separata - Cable clamps are supplied with separate screw

● Per cavo tondo H03VV-F - For round cable H03VV-F

●● Per cavo piatto H03VVH2-F - For flat cable H03VVH2-F

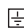
●●● Per cavo tondo H03VV-F Con vite metallica - For round cable H03VV-F - With metal screw



Materiale / Material  Approvati per l'utilizzo in Classe I

5 Nylon 66

Approved for Classe I fittings

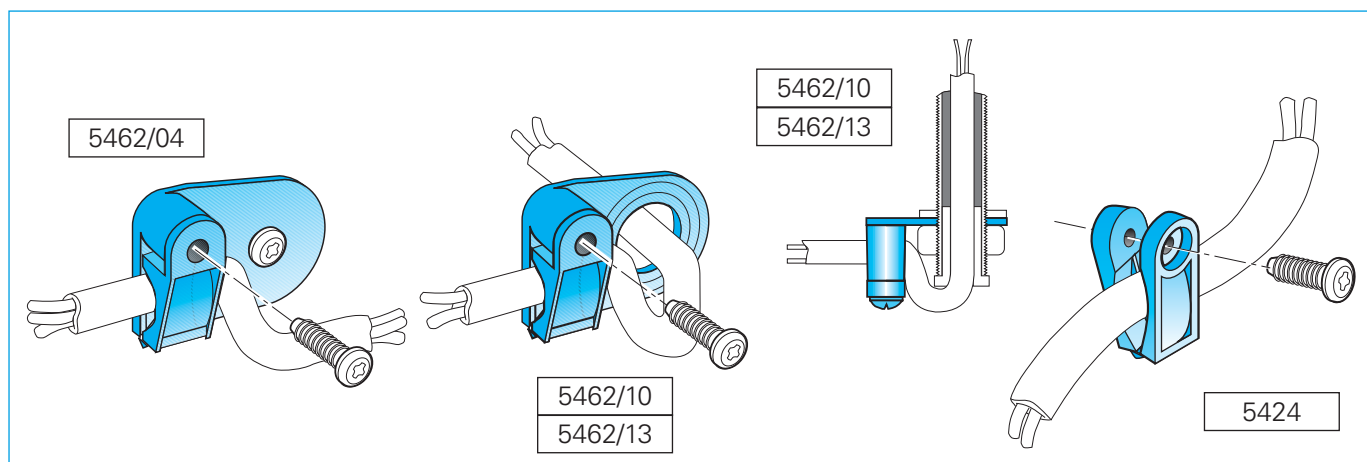
Codice / Code	Dimensioni / Dimensions (mm)					Colore / Colour		Omologato / Certified
	A	B	C	E	F	1 Bianco / White	2 Nero / Black	
5424	15	8	9,5	20	8	Materiale / Material → 5	5	 C.S. N°EH 228

* Dima di foratura - Per cavo H03VV-F Ø min 4,8 - Ø max 6,8

* Template - For cable H03VV-F Ø min 4,8 - Ø max 6,8

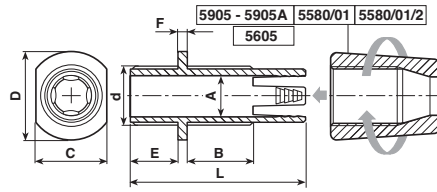
Esempi di utilizzazione

Application examples




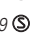
Artikel mit  sind ab Lager lieferbar.

Bloccacavi Cable clamps



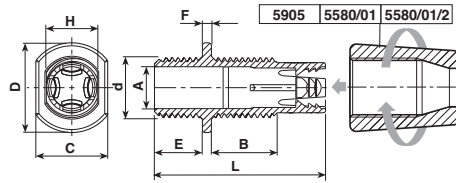
Materiale / Material
6 Nylon 66 RV
11 Policarbonato

Approvati per l'utilizzo in Classe II
Approved for Classe II fittings

Codice / Code	Dimensioni / Dimensions (mm)								Colore / Colour				Omologato Certified	
	A	B	C	D	d	E	F	L	0 Neutro Natural	1 Bianco White	2 Nero Black	4 Oro Gold		
5915A	7	11	12	15	M 10x1	8	1,5	29	Materiale Material →	11	6	6	6	<input checked="" type="checkbox"/> C.S. N°EH 229 
5615	9,5	11	15	17,5	M 13x1	8	1,7	29		11	6	6	6	<input checked="" type="checkbox"/> C.S. N°EH 229 


I bloccacavi sono omologati per l'uso congiunto con le ghiera 5905 - 5905A - 5580/01 - 5580/01/2 - 5605 da ordinare separatamente
M 10x1: Per cavi tondi: H03VV-F/H05VV-F Ø min 4,8 - Ø max 6,5
M 13x1: Per cavi tondi: H05VV-F Ø min 6,8 mm - Ø max 9mm
M 10x1: Per cavi piatti: H03VVH2/H05VVH2-F sez. min 3x4,8 - sez. max 3,6x6,2 - Con adattatore 5576
Carico max: con cavo 2x0,75 = 7 Kg; con cavo 3x0,75 = 10 Kg
M 10x1: Coppia di serraggio max = 130 N cm

Cable clamps are approved for combined use with ring nuts 5905 - 5905A - 5580/01 - 5580/01/2 - 5605 to order separately
M 10x1: For cables: H03VV-F/H05VV-F Ø min 4,8 - Ø max 6,5
M 13x1: For round cables: H05VV-F Ø min 6,8 mm - Ø max 9mm
M 10x1: For cables: H03VVH2/H05VVH2-F sect. min 3x4,8 - sect. max 3,6x6,2 - With adapter 5576
Max load: with cable 2x0,75 = 7 Kgs; with cable 3x0,75 = 10 Kgs
M 10x1: Tightening torque max = 130 N cm



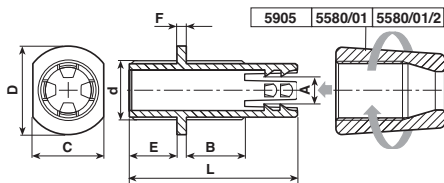
Materiale / Material
6 Nylon 66 RV

Approvati per l'utilizzo in Classe II
Approved for Classe II fittings

Codice / Code	Dimensioni / Dimensions (mm)								Colore / Colour		Omologato Certified	
	A	B	C	D	d	E	F	H	L	2 Nero Black		
5915/2	7	11	12	15	M 10x1	8	1,5	8,5	29	Materiale Material →	6	<input checked="" type="checkbox"/> C.S. N°EH 229 

I bloccacavi sono omologati per l'uso congiunto con le ghiera 5905 - 5905A - 5580/01 - 5580/01/2 da ordinare separatamente
Per cavi tondi: H03VV-F/H05VV-F Ø min 4,8 - Ø max 6,5
Per cavi piatti: H03VVH2/H05VVH2-F sez. min 3x4,8 - sez. max 3,6x6,2 - Con adattatore 5576
Carico max: con cavo 2x0,75 = 7 Kg; con cavo 3x0,75 = 10 Kg
Coppia di serraggio max 130 Ncm

Cable clamps are approved for combined use with ring nuts 5905 - 5905A - 5580/01 - 5580/01/2 to order separately
For cables: H03VV-F/H05VV-F Ø min 4,8 - Ø max 6,5
For cables: H03VVH2/H05VVH2-F sect. min 3x4,8 - sect. max 3,6x6,2 - With adapter 5576
Max load: with cable 2x0,75 = 7 Kgs; with cable 3x0,75 = 10 Kgs
Tightening torque max = 130 N cm



Materiale / Material
6 Nylon 66 RV
11 Policarbonato

Codice / Code	Dimensioni / Dimensions (mm)								Colore / Colour		
	A	B	C	D	d	E	F	L	0 Neutro Natural	1 Bianco White	
5580/1024	6	9,7	12	15	M 10x1	8	1,5	28	Materiale Material →	11	6

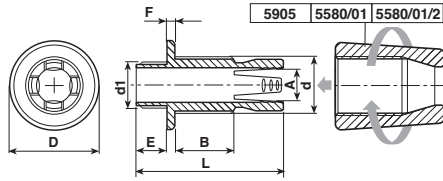
Il bloccacavo è omologato per l'uso congiunto con le ghiera 5905 - 5580/01 - 5580/01/2 da ordinare separatamente
Per cavi: tondi Ø min 3,5 - Ø max 4,5
M 10x1: Coppia di serraggio max = 130 N cm - Carico max: con cavo 2x0,75 = 7 Kg

Cable clamp is approved for combined use with ring nuts 5905 - 5580/01 - 5580/01/2 to order separately
For cables: round Ø min 3,5 - Ø max 4,5
M 10x1: Max tightening torque = 130 N cm - Max load: with cable 2x0,75 = 7 Kgs

Artikel mit  sind ab Lager lieferbar.

Bloccacavi

Cable clamps



Materiale / Material

- 6 Nylon 66 RV
- 11 Policarbonato

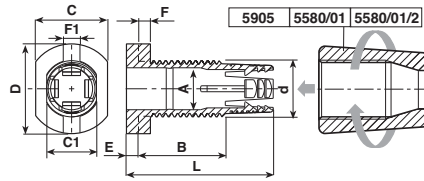
Codice / Code	Dimensioni / Dimensions (mm)								Colore / Colour		
	A	B	D	d	d1	E	F	L	0 Neutro Natural	1 Bianco White	2 Nero Black
5580/08	5,3	9,7	14,8	M 10x1	M 8x1	5,1	1,5	24,5	Materiale Material → 11		
5580/10	6,3	9,7	14,8	M 10x1	M 10x1	8,1	1,5	27,5	11	6	6

Il bloccacavo è omologato per l'uso congiunto con le ghiera 5905 - 5580/01 - 5580/01/2 da ordinare separatamente
Per cavi tondi: Ø min 4,2 - Ø max 4,8

M 10x1: Coppia di serraggio max = 130 N cm - Carico max: con cavo 2x0,75 = 7 Kg

Cable clamp is approved for combined use with ring nuts 5905 - 5580/01 - 5580/01/2 to order separated
For cables round: Ø min 4,2 - Ø max 4,8

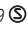

M 10x1: Max tightening torque = 130 N cm - Max load: with cable 2x0,75 = 7 Kgs



Materiale / Material

- 5 Nylon 66
- 6 Nylon 66 RV
- 11 Policarbonato

Approvati per l'utilizzo in Classe II
Approved for Classe II fittings

Codice / Code	Dimensioni / Dimensions (mm)										Colore / Colour				Omologato Certified
	A	B	C	C1	D	d	E	F	F1	L	0 Neutro Natural	1 Bianco White	2 Nero Black	4 Oro Gold	
5916	7	14,5	12	8,3	15	M 10x1	2	2	2,8	24,5	Materiale Material → 11				<input checked="" type="checkbox"/> C.S. N°EH 229 
5916/26	7	16,5	12	8,3	15	M 10x1	2	2	2,8	26,5		6	6		
5919	7	19,5	12	8,3	15	M 10x1	2	2	2,8	29,5	11	5	5	5	<input checked="" type="checkbox"/> C.S. N°EH 229 
5904	6,8	60	-	8,3	14,5	M 10x1	1,8	1,5	2,8	70,8	5				

I bloccacavi sono omologati per l'uso congiunto con le ghiera 5905 - 5905A - 5580/01 - 5580/01/2 da ordinare separatamente
Per cavi tondi: H03VV-F/H05VV-F Ø min 4,8 - Ø max 6,5

Per cavi piatti: H03VVH2/H05VVH2-F sez. min 3x4,8 - sez. max 3,6x6,2 - Con adattatore 5576

Carico max: con cavo 2x0,75 = 7 Kg; con cavo 3x0,75 = 10 Kg

Coppia di serraggio max = 130 N cm

Cable clamps are approved for combined use with ring nuts 5905 - 5580/01 - 5580/01/2 to order separately

For cables: H03VV-F/H05VV-F Ø min 4,8 - Ø max 6,5

For cables: H03VVH2/H05VVH2-F sect. min 3x4,8 - sect. max 3,6x6,2 - With adapter 5576

Max load: with cable 2x0,75 = 7 Kgs; with cable 3x0,75 = 10 Kgs

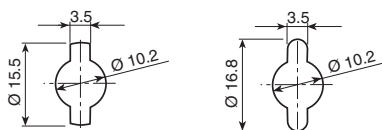
Max tightening torque = 130 N cm

Esempi di utilizzazione

Application examples

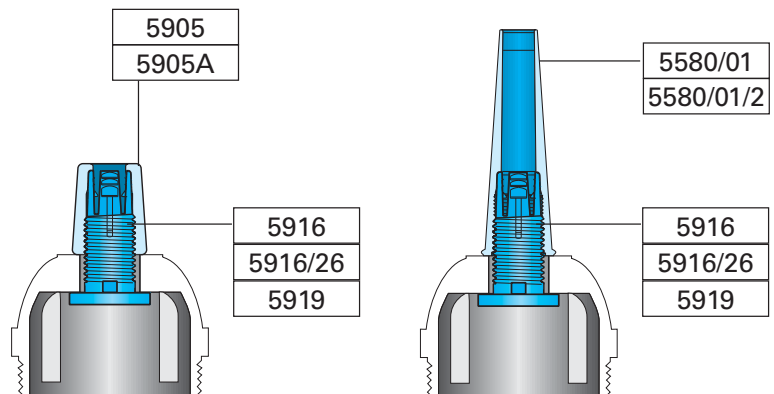
Dima di foratura

Template



5916	P min 2	P max 4,5
5916/26	P min 4,4	P max 6,5
5919	P min 6,4	P max 8,5

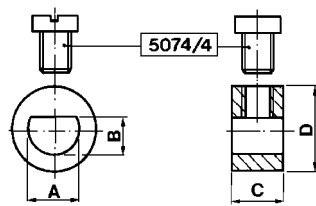
P= Spessore / thickness



Artikel mit  sind ab Lager lieferbar.

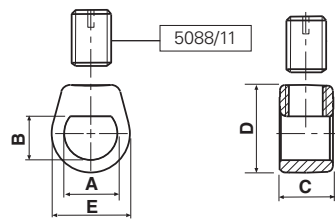
Bloccacavi

Cable clamps



Materiale / Material
6 Nylon 66 RV

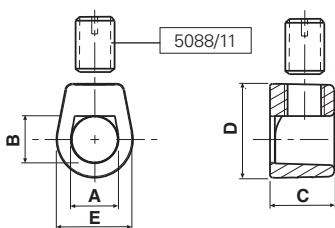
Codice / Code	Dimensioni / Dimensions (mm)				Colore / Colour	
	A	B	C	D	1 Bianco White	2 Nero Black
5176	6,5	4,2	5,5	10,5	Materiale / Material → 6	6



Materiale / Material
6 Nylon 66 RV
11 Policarbonato
18 Polibutil RV-AE

Codice / Code	Dimensioni / Dimensions (mm)						Colore / Colour			
	A	B	C	D	d	E	0 Neutro Natural	1 Bianco White	2 Nero Black	4 Oro Gold
5227	8,5	7	8,6	14	M 6x1	12,5	Materiale / Material → 11	6	6 18	6

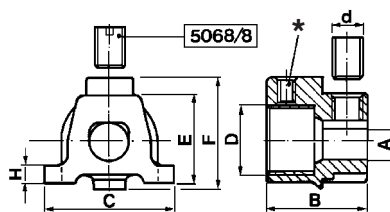
I bloccacavi vengono forniti con grano separato.
Cable clamps are supplied with separate threaded grub.



Materiale / Material
6 Nylon 66 RV

Codice / Code	Dimensioni / Dimensions (mm)						Colore / Colour	
	A	B	C	D	d	E	1 Bianco White	6
5346	9,5	9,5	13	19	M 8x1,25	15,5	Materiale / Material → 6	6

I bloccacavi vengono forniti con grano separato.
Cable clamps are supplied with separate threaded grub.



Materiale / Material
6 Nylon 66 RV

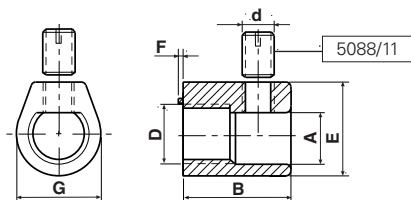
Codice / Code	Dimensioni / Dimensions (mm)								Colore / Colour	
	A	B	C	D	d	E	F	H	2 Nero Black	6
5337/1/10	7	18	24	M 10x1	M 6x1	16	20	3	Materiale / Material → 6	6
5337/1/13	7	18	24	M 13x1	M 6x1	16	20	3	6	6

* Foro predisposto per vite autofilettante: Ø 2,9x6,5 mm
M 10x1: Coppia di serraggio max = 130 N cm - M 13x1: Coppia di serraggio max = 150 N cm
I bloccacavi vengono forniti con grano filettato separato.

* Hole suitable for self-threading screw: Ø 2,9x6,5 mm
M 10x1: Max tightening torque = 130 N cm - M 13x1: Max tightening torque = 150 N cm
Cable clamps are supplied with separate threaded grub.


Artikel mit  sind ab Lager lieferbar.



Bloccacavi Cable clamps



Materiale / Material

- 6** Nylon 66 Rv
- 18** Polibutil RV-AE

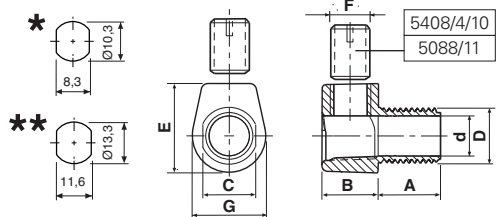
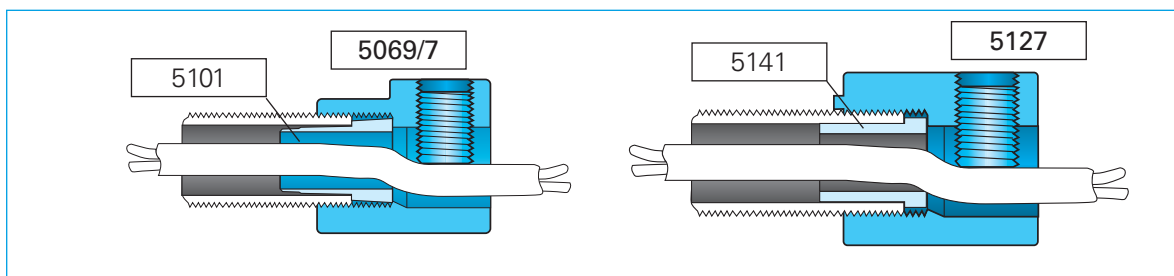
 Approvati per l'utilizzo in **Classe I**
Approved for **Classe I** fittings

Codice / Code	Dimensioni / Dimensions (mm)							Colore / Colour			Omologato / Certified
	A	B	D	d	E	F	G	1 Bianco / White	2 Nero / Black		
5127	10	23	M 13x1	M 8x1,25	20	1	18	Materiale / Material → 6	6 18	 C.S. N°EH 228 	

M 13x1: Coppia di serraggio max=150 N cm - I bloccacavi vengono forniti con grano filettato separato.
Per cavi: H03VV-F / H05VV-F Ø min 8 - Ø max 9,5


M 13x1: Max tightening torque=150 N cm - Cable clamps are supplied with separate threaded grub.
For cables: H03VV-F / H05VV-F Ø min 8 - Ø max 9,5


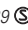

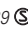

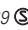

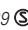


Esempi di utilizzazione Application examples



Materiale / Material

- 5** Nylon 66
- 6** Nylon 66 RV
- 11** Policarbonato
- 21** Nylon 66 RV-AE
- 24** Liquid Cristal Polymers
- 25** Polifenilensolfuro RV40

 Approvati per l'utilizzo in **Classe II**
Approved for **Classe II** fittings

Codice / Code	Dimensioni / Dimensions (mm)							Colore / Colour					Omologato / Certified	
	A	B	C	D	d	E	F	G	Natural	0 Neutro / White	1 Bianco / Black	2 Nero / Gold		4 Oro
5100/7/109	9	10	8,0	M 10x1	7,2	16	M 7x1	14	Materiale / Material →	5 11 24 25	6	6 25	6	 C.S. N°EH 229 
5100/7/114	14	10	8,0	M 10x1	7,2	16	M 7x1	14		11	6	6	6	 C.S. N°EH 229 
5346/07	7	12	11,5	M 13x1	9,5	19	M 8x1,25	15		11	6	6		 C.S. N°EH 229 
5346/11	11	12	11,5	M 13x1	9,5	19	M 8x1,25	15		11	6	6	6	 C.S. N°EH 229 
5346/20	20	12	11,5	M 13x1	9,5	19	M 8x1,25	15		11		6		 C.S. N°EH 229 

* Dima di foratura 5100/7 - ** Dima di foratura 5346 - I bloccacavi vengono forniti con grano filettato separato.

M 10x1: Coppia di serraggio max = 130 N cm - **M 13x1:** Coppia di serraggio max = 150 N cm

Articoli 5100/7/109-5100/7/114: per cavi H03VV-F/H05VV-F Ø min 4,8 - Ø max 6,5 e H03VVH2-F sez. min 3x4,8 - sez. max 3,6x6

Articoli 5346/07-5346/11-5346/20: per cavi H03VV-F/H05VV-F Ø min 4,8 - Ø max 9 e H03VVH2-F sez. min 3x4,8 - sez. max 5x7,2

* Template 5100/7 - ** Template 5346 - Cable clamps are supplied with separate threaded grub.

M 10x1: Max tightening torque = 130 N cm - **M 13x1:** Max tightening torque = 150 N cm

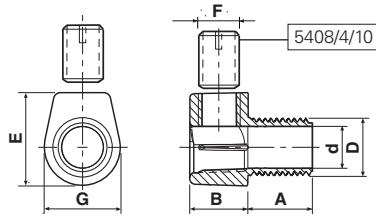
Articles 5100/7/109-5100/7/114: for cables H03VV-F/H05VV-F Ø min 4,8 - Ø max 6,5 and H03VVH2-F sect. min 3x4,8 - sect. max 3,6x6

Articles 5346/07-5346/11-5346/20: for cables H03VV-F/H05VV-F Ø min 4,8 - Ø max 9 and H03VVH2-F sect. min 3x4,8 - sect. max 5x7,2

Artikel mit  sind ab Lager lieferbar.

Bloccacavi

Cable clamps



Materiale / Material

- 5** Nylon 66
- 6** Nylon 66 RV
- 11** Polycarbonato

Approvati per l'utilizzo in Classe II
Approved for Classe II fittings

Codice / Code	Dimensioni / Dimensions (mm)							Colore / Colour				Omologato Certified	
	A	B	D	d	E	F	G	0 Neutro Natural	1 Bianco White	2 Nero Black	4 Oro Gold		
5100/7/05	5	10	M 10x1	7,2	16	M 7x1	13,2	Materiale Material →	11	6	6	6	<input checked="" type="checkbox"/> C.S. N°EH 229 ©
5100/7/08	8	10	M 10x1	7,2	16	M 7x1	13,2		11	6	6	6	<input checked="" type="checkbox"/> C.S. N°EH 229 ©
5100/7/11	11	10	M 10x1	7,2	16	M 7x1	13,2		11	6	6	6	<input checked="" type="checkbox"/> C.S. N°EH 229 ©

I bloccacavi vengono forniti con grano filettato separato.

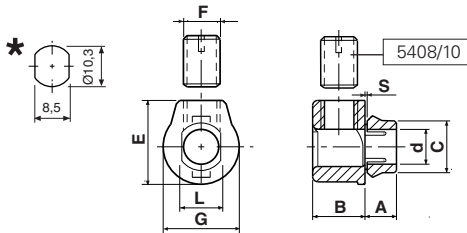
M 10x1: Coppia di serraggio max = 130 N cm

Per cavi: H03VV-F/H05VV-F Ø min 4,8 - Ø max 6,5 e H03VVH2-F sez. min 3x4,8 - sez. max 3,6x6,4

Cable clamps are supplied with separate threaded grub.

M 10x1: Max tightening torque = 130 N cm

For cables: H03VV-F/H05VV-F Ø min 4,8 - Ø max 6,5 and H03VVH2-F sect. min 3x4,8 - sect. max 3,6x6,4



Materiale / Material

- 6** Nylon 66 Rv
- 11** Polycarbonato

Approvati per l'utilizzo in Classe II
Approved for Classe II fittings

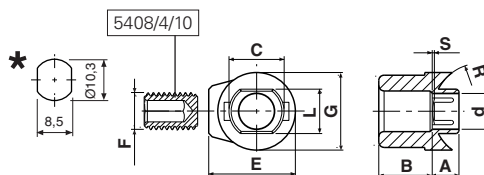
Codice / Code	Dimensioni / Dimensions (mm)									Colore / Colour				Omologato Certified	
	A	B	C	d	E	F	G	L	S	0 Neutro Natural	1 Bianco White	2 Nero Black	4 Oro Gold		
5100/6/5	6	10	10	6,7	16,2	M 7x1	14,5	8,2	0,8±1	Materiale Material →	11	6	6	6	<input checked="" type="checkbox"/> C.S. N°EH 229 ©

* Dima di foratura - I bloccacavi vengono forniti con grano filettato separato.

Per cavi: H03VV-F Ø min 4,8 - Ø max 6,5 e H03VVH2-F sez. min 3x4,8 - sez. max 3,6x6,4

* Template - Cable clamps are supplied with separate threaded grub.

For cables: H03VV-F Ø min 4,8 - Ø max 6,5 and H03VVH2-F sect. min 3x4,8 - sect. max 3,6x6,4



Materiale / Material

- 6** Nylon 66 RV

Approvati per l'utilizzo in Classe II
Approved for Classe II fittings

Codice / Code	Dimensioni / Dimensions (mm)										Colore / Colour			Omologato Certified	
	A	B	C	d	E	F	G	L	R	S	1 Bianco White	2 Nero Black	4 Oro Gold		
5100/6518	5	10	10	6,7	16,2	M 7x1	14,5	8,2	9	0,8±1	Materiale Material →	6	6	6	<input checked="" type="checkbox"/> C.S. N°EH 229 ©

* Dima di foratura - Per cavi: H03VV-F Ø min 4,8 - Ø max 6,5 e H03VVH2-F sez. min 3x4,8 - sez. max 3,6x6,4

* Template - For cables: H03VV-F Ø min 4,8 - Ø max 6,5 and H03VVH2-F sect. min 3x4,8 - sect. max 3,6x6,4